

Firmware Update Guide

Crucial M225 Series Firmware 1916 | Boot from USB Flash Drive

This document describes the process of updating the firmware on the Crucial M225 series solid-state drive using a bootable USB flash drive and .exe files.

WARNING: The firmware update process is done entirely at your own risk. Before initiating the update process be sure to backup or make copies of all important files. If the firmware process is interrupted your solid-state drive may not function properly.

Complete the following steps before starting the firmware update process:

1. Backup the Solid-State Drive

Perform a complete system backup to ensure recovery of any lost data during the firmware update process. Crucial is not responsible for any data loss that might occur during or after a firmware update. Following a successful firmware update data restoration should not be required.

2. Plug in the Power

Ensure your mobile PC or desktop PC is plugged in to AC power during the update process. Do not remove power at any time during the firmware update process as this could produce incomplete results and may render your solid-state drive unusable.

3. Check the Boot Order

As a default, most systems will boot from the R/W CD-ROM drive before the system drive. To determine the boot order for your system, reboot and enter BIOS Setup. Depending on the BIOS vendor, look for a parameter named Boot Device Priority or Boot Load Order. Choose USB flash drive as the first order of system boot.

4. Close all Other Applications

Before beginning the firmware download process close all other programs except for your internet browser.

Download the Firmware Update

1. Go to the Crucial support website located at www.crucial.com/support
2. Find the **Boot from USB Flash Drive** firmware update associated with the part number of your Crucial solid-state drive.
3. Click **Download** and the browser will prompt you. Select **Save** to download the ZIP folder to your system. The ZIP folder contains a DOS Boot folder and .exe file.

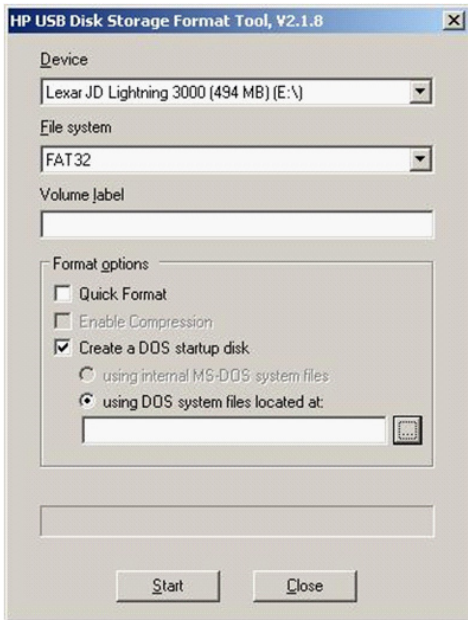
Create Bootable USB Flash Drive

To create a bootable USB flash drive we recommend you download the HP USB Disk Storage Format Tool at: http://h50178.www5.hp.com/local_drivers/17550/SP27608.exe

1. Download the HP USB Disk Storage Format Tool and follow the onscreen instructions.
2. The InstallShield® Wizard will install HP USB Disk Storage Format Tool on your computer.
3. Insert your USB Flash Drive into your system and double click the HP USB Disk Storage Format Tool icon.



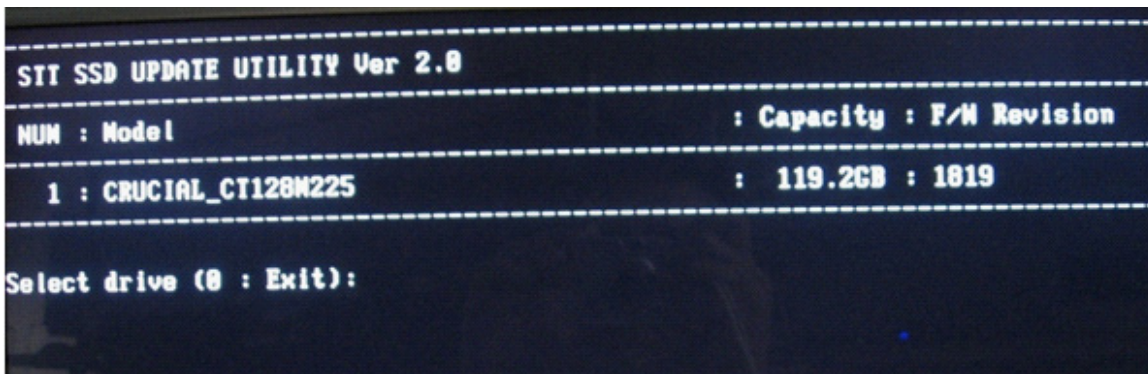
4. Select **Create a DOS startup disk** and using **DOS system files located at:** as seen below:



5. Click the **file icon** and locate the DOS Boot folder you previously downloaded in the Firmware update.
6. Select the DOS Boot folder, and then click **Start**. Your USB Flash Drive is now bootable.
7. Next copy the .exe file, downloaded in the Firmware update (i.e. CT256M.exe), to the bootable USB Flash Drive.

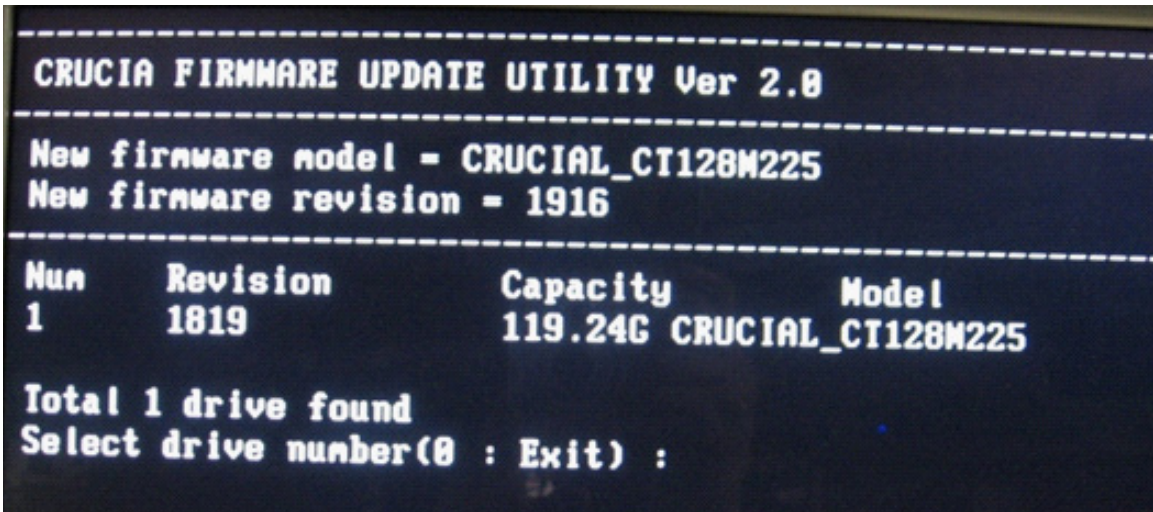
Run the Firmware Update

1. Insert the bootable USB Flash Drive into your system and reboot your system.
2. The system will bootable from the USB Flash Drive
Note: If the system does not boot from the USB Flash Drive repeat the steps under **Check the Boot Order**
3. When the system boots from the USB Flash Drive properly you will be given a C: prompt. Type SSDCHK. Press ENTER to continue. The following screen will appear:

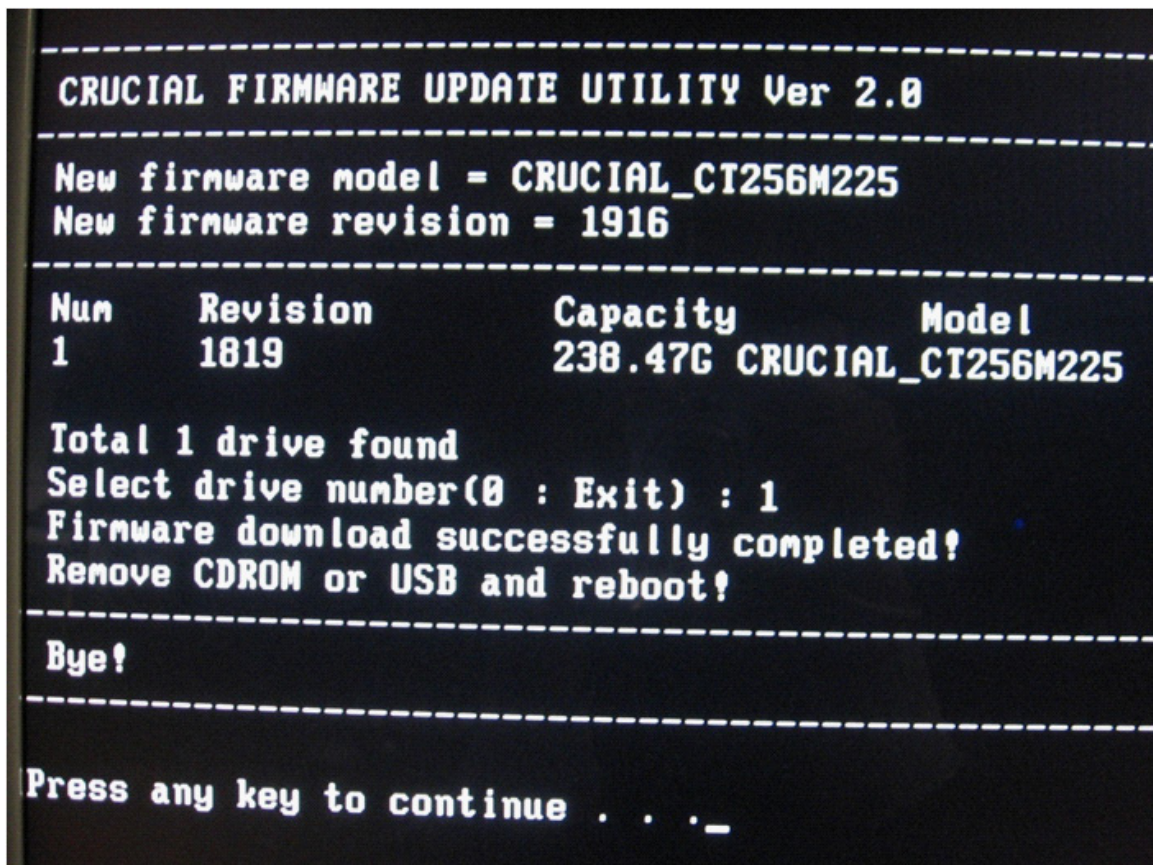


4. Verify the model name matches your Crucial Solid-State Drive (i.e. CT128M225). At the prompt type in the number that corresponds to your drive (i.e. 1) Press ENTER to continue. Press "Y" to find your target drive
5. You will be given a C: prompt. Type updater and hit ENTER.

6. You will be asked: Do you want to find target drive? Type Y to continue.



7. Type in the number that corresponds to your drive. Press ENTER to continue. When the update is successfully completed the following screen will appear:



revision: 01/22/2010