

## Firmware Update Guide

### Crucial M225 Series Firmware 1819 | Boot from USB Flash Drive

This document describes the process of updating the firmware on the Crucial M225 series solid-state drive using a bootable USB flash drive and .exe files.

**WARNING:** The firmware update process is done entirely at your own risk. Before initiating the update process be sure to backup or make copies of all important files. If the firmware process is interrupted your solid-state drive may not function properly.

#### Complete the following steps before starting the firmware update process:

##### 1. Backup the Solid-State Drive

Perform a complete system backup to ensure recovery of any lost data during the firmware update process. Crucial is not responsible for any data loss that might occur during or after a firmware update. Following a successful firmware update data restoration should not be required.

##### 2. Plug in the Power

Ensure your mobile PC or desktop PC is plugged in to AC power during the update process. Do not remove power at any time during the firmware update process as this could produce incomplete results and may render your solid-state drive unusable.

##### 3. Check the Boot Order

As a default, most systems will boot from the R/W CD-ROM drive before the system drive. To determine the boot order for your system, reboot and enter BIOS Setup. Depending on the BIOS vendor, look for a parameter named Boot Device Priority or Boot Load Order. Choose USB flash drive as the first order of system boot.

##### 4. Close all Other Applications

Before beginning the firmware download process close all other programs except for your internet browser.

#### Download the Firmware Update

1. Go to the Crucial support website located at [www.crucial.com/support](http://www.crucial.com/support)
2. Find the **Boot from USB** Flash Drive firmware update associated with the part number of your Crucial solid-state drive.
3. Click **Download** and the browser will prompt you. Select **Save** to download the ZIP folder to your system. The ZIP folder contains a DOS Boot folder and .exe file.

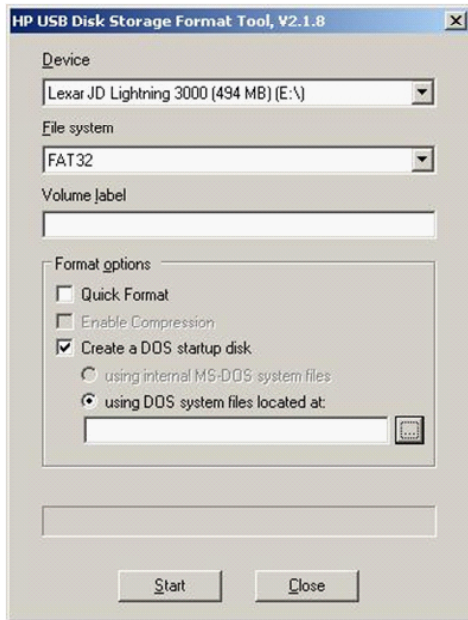
#### Create Bootable USB Flash Drive

To create a bootable USB flash drive we recommend you download the HP USB Disk Storage Format Tool at: [http://h50178.www5.hp.com/local\\_drivers/17550/SP27608.exe](http://h50178.www5.hp.com/local_drivers/17550/SP27608.exe)

1. Download the HP USB Disk Storage Format Tool and follow the onscreen instructions.
2. The InstallShield® Wizard will install HP USB Disk Storage Format Tool on your computer.
3. Insert your USB Flash Drive into your system and double click the HP USB Disk Storage Format Tool icon.



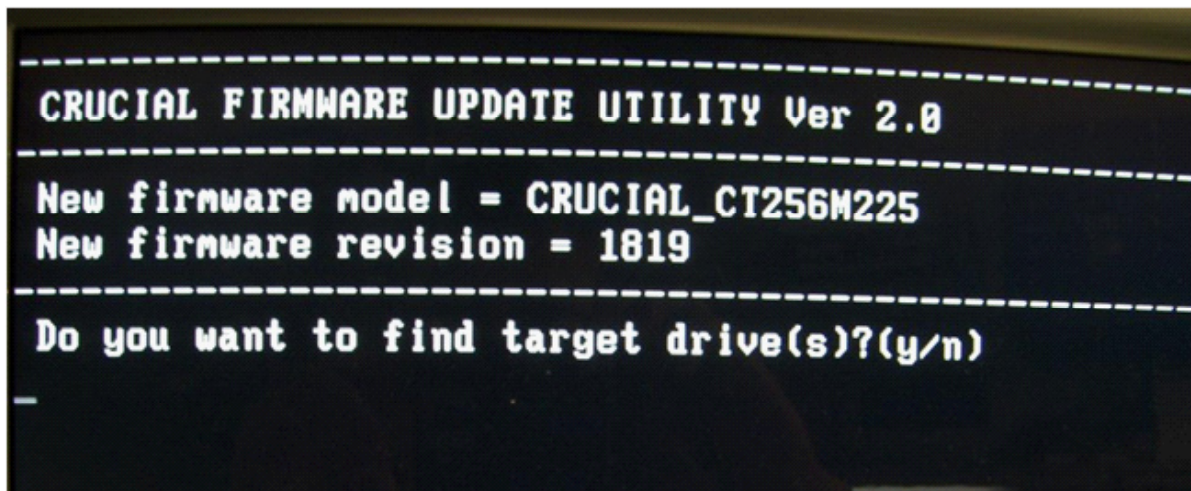
4. Select **Create a DOS startup disk** and using **DOS system files located at:** as seen below:



5. Click the **file icon** and locate the DOS Boot folder you previously downloaded in the Firmware update.
6. Select the DOS Boot folder, and then click **Start**. Your USB Flash Drive is now bootable.
7. Next copy the .exe file, downloaded in the Firmware update (i.e. CT256M.exe), to the bootable USB Flash Drive.

#### Run the Firmware Update

1. Insert the bootable USB Flash Drive into your system and reboot your system.
2. The system will bootable from the USB Flash Drive  
Note: If the system does not boot from the USB Flash Drive repeat the steps under **Check the Boot Order**
3. When the system boots from the USB Flash Drive properly you will be given a C: prompt. Type the short model description for your solid-state drive (ct64m, ct128m or ct256m) Press ENTER to continue. The follow screen will appear:



4. Verify the New firmware model matches the model number of your Crucial Solid-State Drive
5. Press "Y" to find your target drive

6. The follow screen will appear:

```
-----  
CRUCIAL FIRMWARE UPDATE UTILITY Ver 2.0  
-----  
New firmware model = CRUCIAL_CT256M225  
New firmware revision = 1819  
-----  
Num      Revision      Capacity      Model  
1        1571            238.47G     CRUCIAL_CT256M225  
-----  
Total 1 drive found  
Select drive number(0 : Exit) : _
```

7. Select the appropriate number for your drive. In this example the drive Num is 1.

8. When the update is successfully completed the following screen will appear:

```
-----  
CRUCIAL FIRMWARE UPDATE UTILITY Ver 2.0  
-----  
New firmware model = CRUCIAL_CT256M225  
New firmware revision = 1819  
-----  
Num      Revision      Capacity      Model  
1        1571            238.47G     CRUCIAL_CT256M225  
-----  
Total 1 drive found  
Select drive number(0 : Exit) : 1  
Firmware download successfully completed!  
Remove CDROM or USB and reboot!  
-----  
Bye!  
-----  
C:\>
```

revision: 10/22/2009